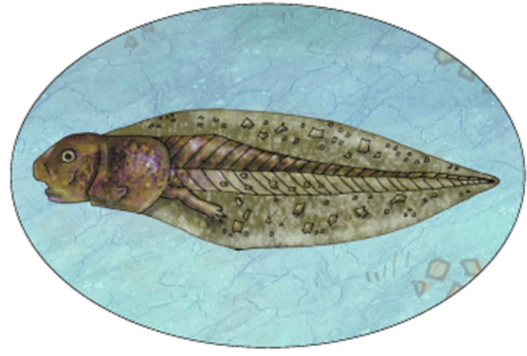
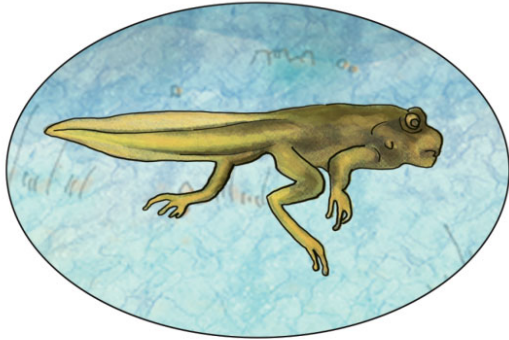




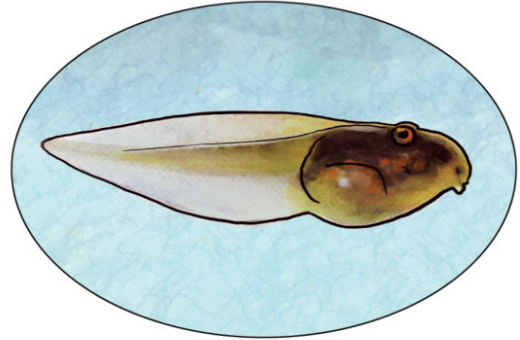
***Hyla sarda* (Rainette sarde)**



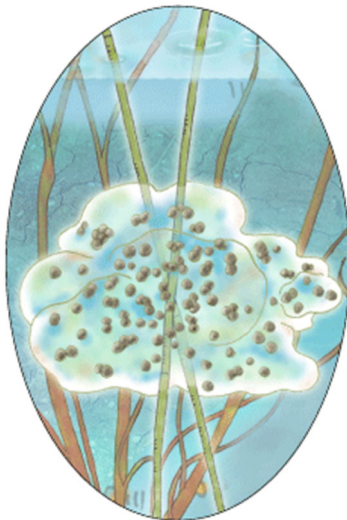
Têtard rainette (2 pattes)



Têtard rainette (4 pattes)



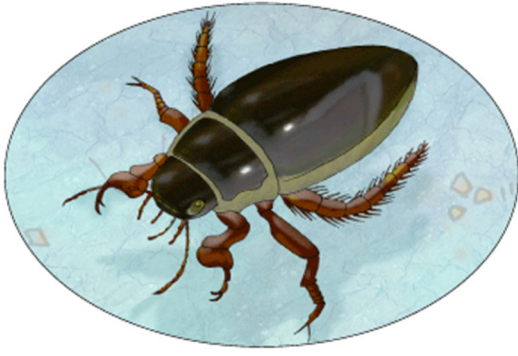
Têtard rainette



Ponte de rainette



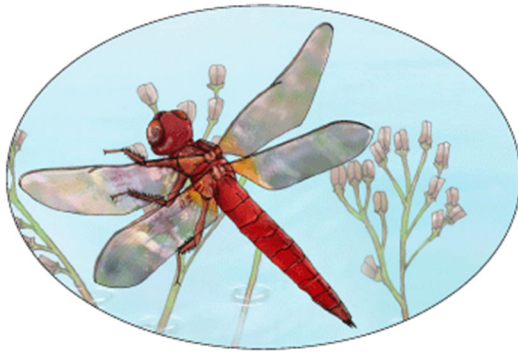
Larve de dytique



Dytique



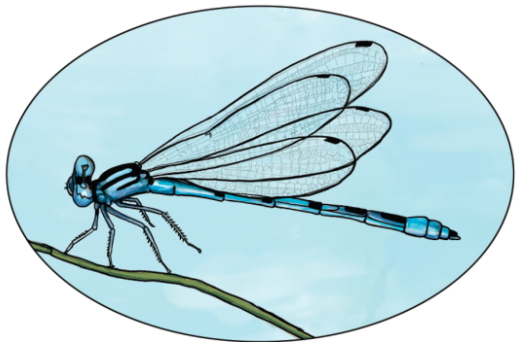
***Bufo balearicus* (Crapaud vert)**



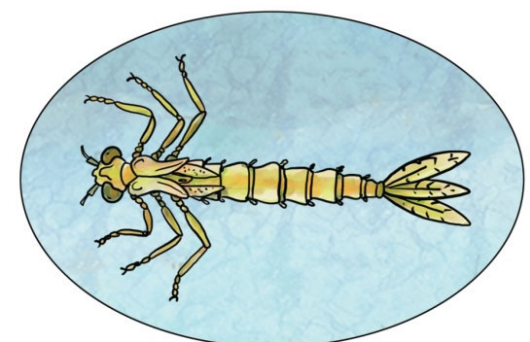
Libellule



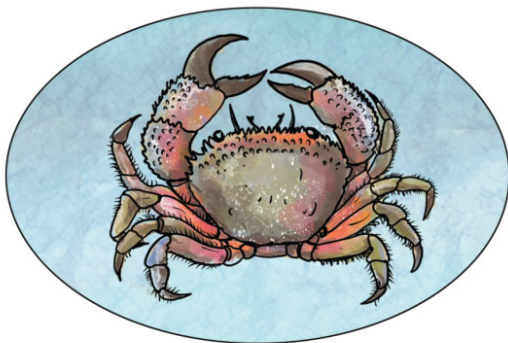
Larve de libellule



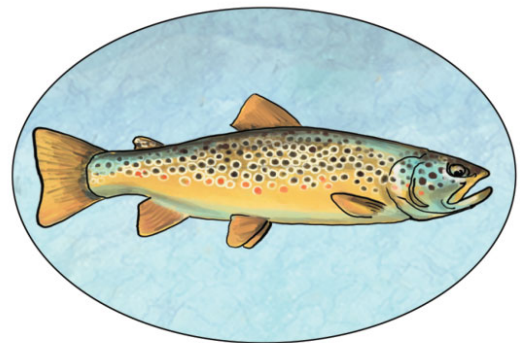
Demoiselle adulte



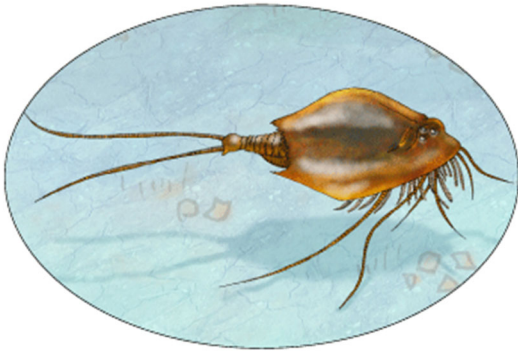
Larve de demoiselle



Crabe



Poisson



Triops cancriformis
(Triops cancriforme)



Œufs de Triops



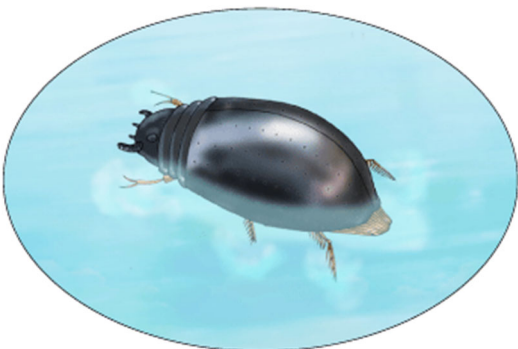
Tanytarsus stagnalis
(Tanytarsus)



Héron cendré



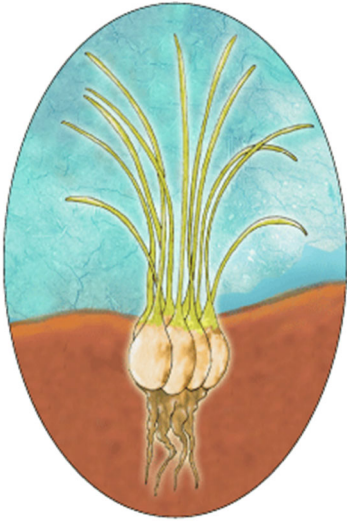
Notonecte



Gyrin



Gerris



Isoetes velata
(Isoète à voile)



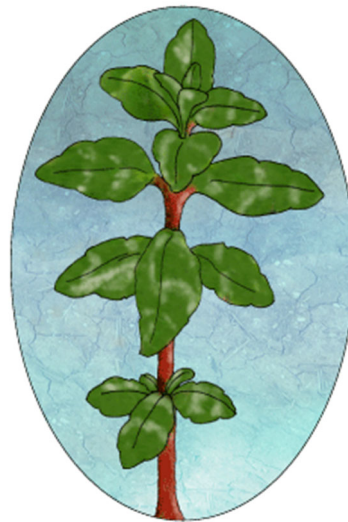
Baldellia ranunculoides
(Baldellie)



Ranunculus ophioglossifolius
(Renoncule à feuilles d'ophioglosse)



Cicendia filiformis
(Cicendie filiforme)



Mentha pulegium
(Menthe pouillot)



Helosciadium crassipes
(Ache)



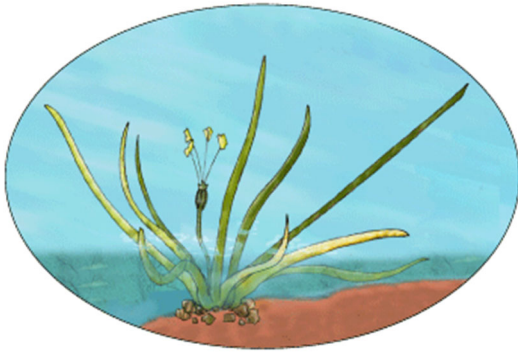
Mentha pulegium
(Menthe pouillot en fleur)



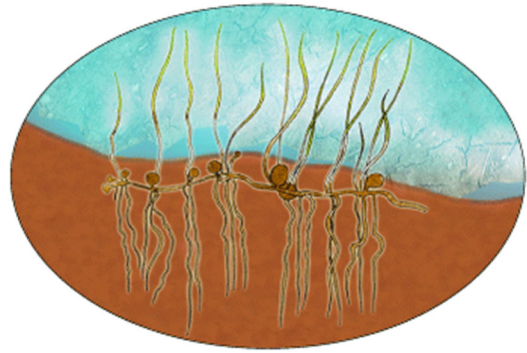
Pulicaria sicula
(Pulicaire de Sicile)



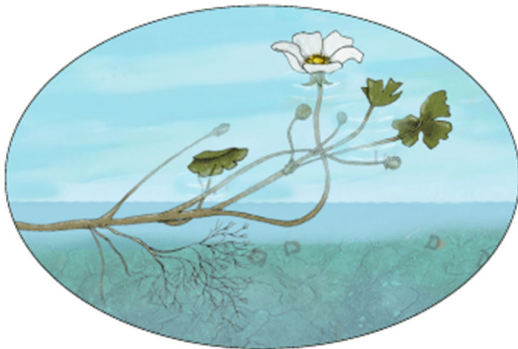
Narcissus serotinus
(Narcisse tardif)



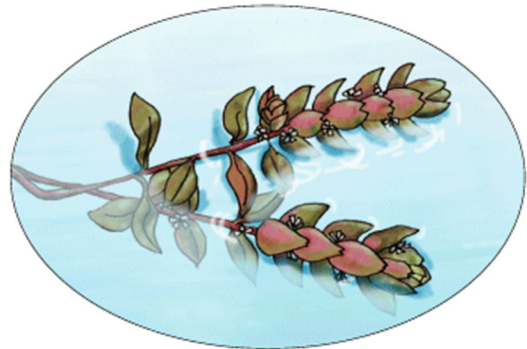
Littorella uniflora
(Littorelle à une fleur)



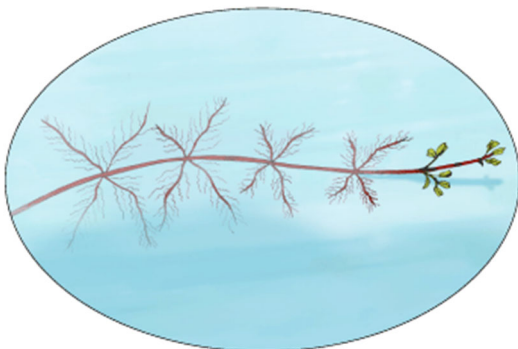
Pilularia minuta
(Pilulaire délicate)



Ranunculus peltatus
(Renoncule peltée)



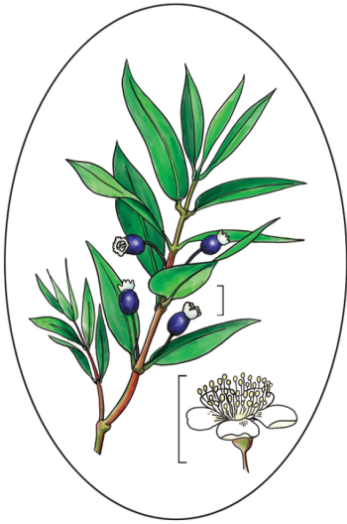
Illecebrum verticillatum
(Illécèbre verticillé)



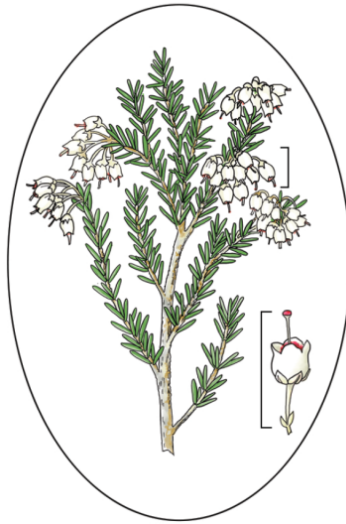
Myriophyllum alterniflorum
(Myriophylle à feuilles alternes)



Cynodon dactylon
(Chiendent)



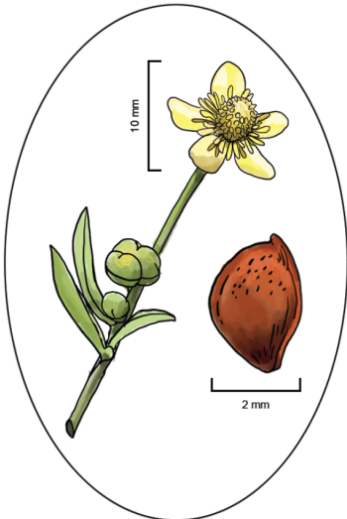
Myrtus communis
(Myrte)



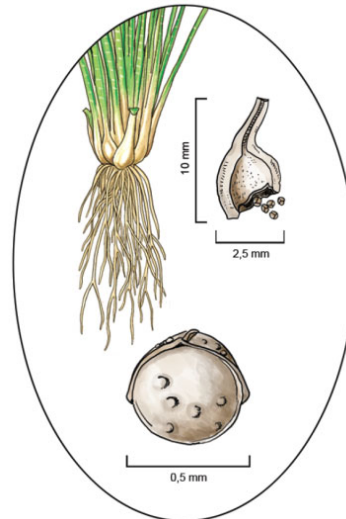
Erica arborea
(Bruyère arborescente)



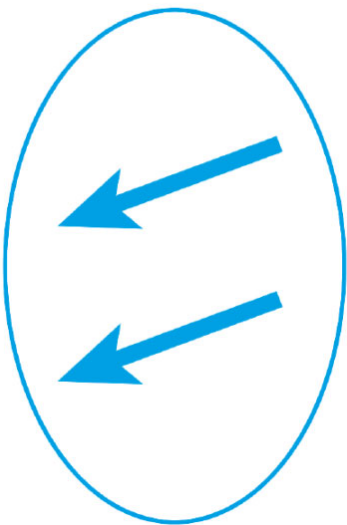
Arbutus unedo
(Arbousier)



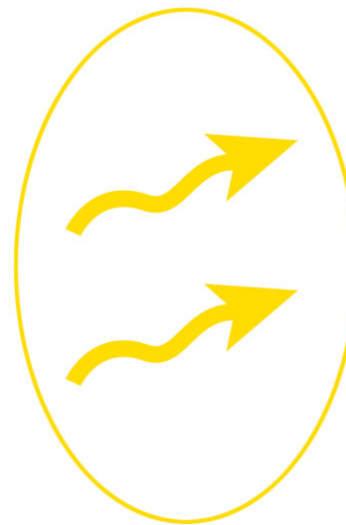
Graine de renoncule



Mégaspore d'isoète



Apports en eau



Pertes en eau